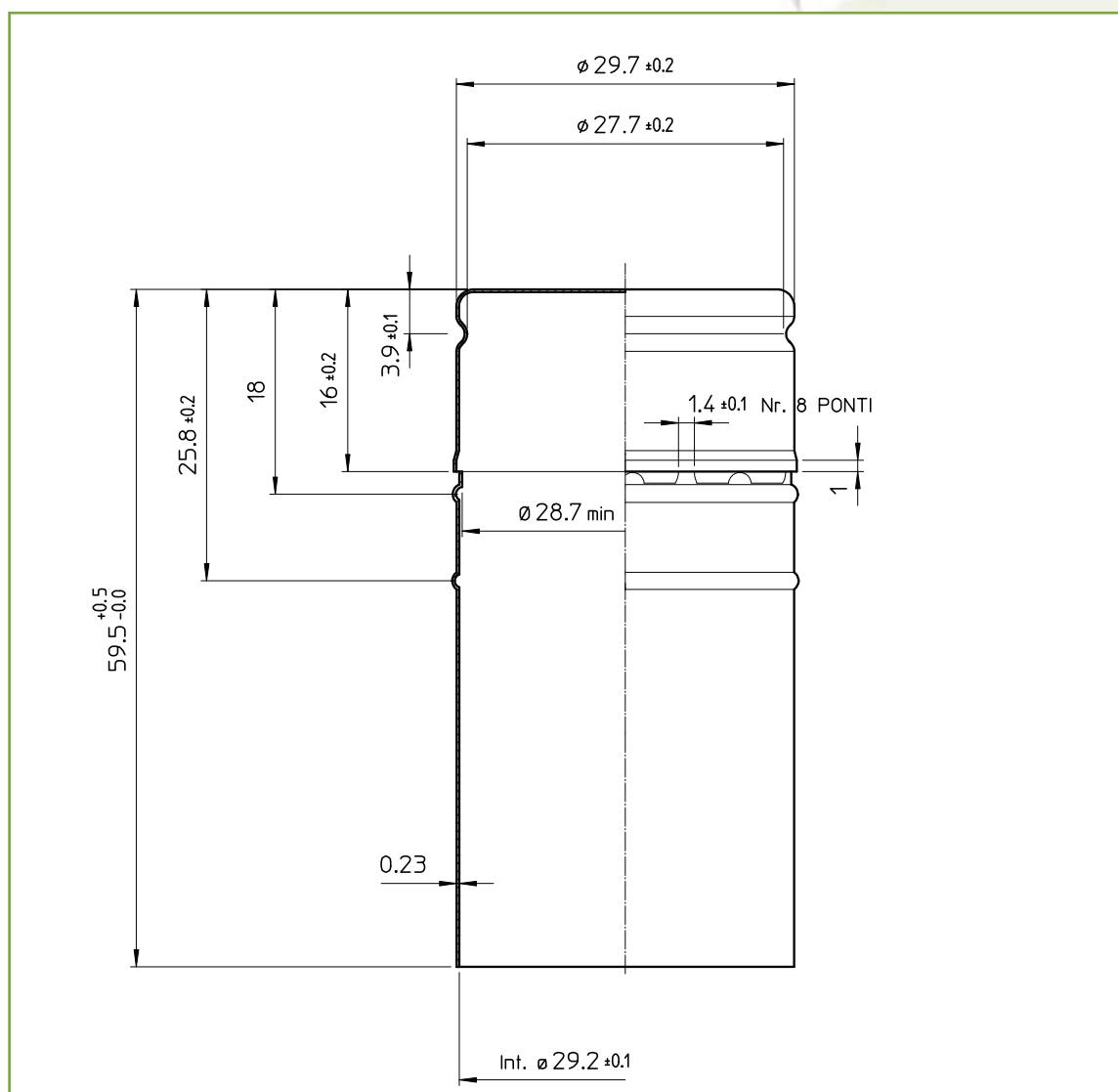


PRODUCT NAME: ALCORK – BVS 30H60

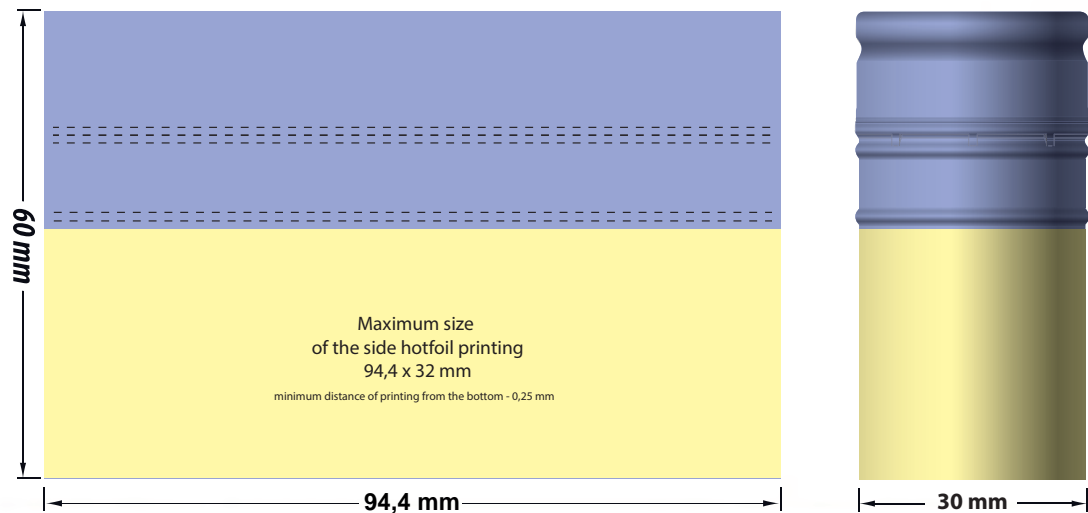
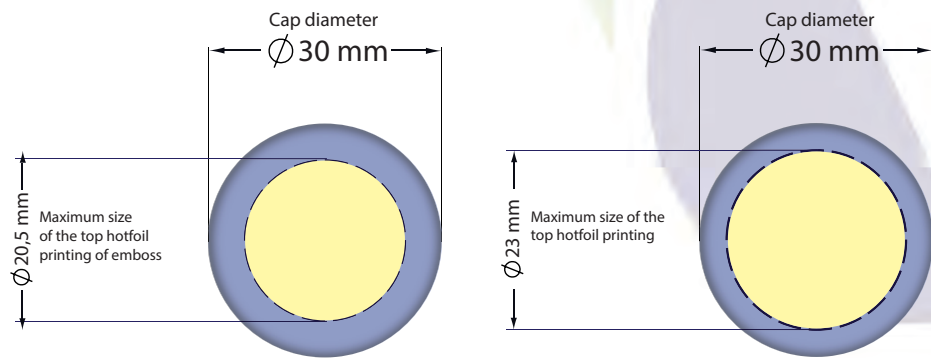
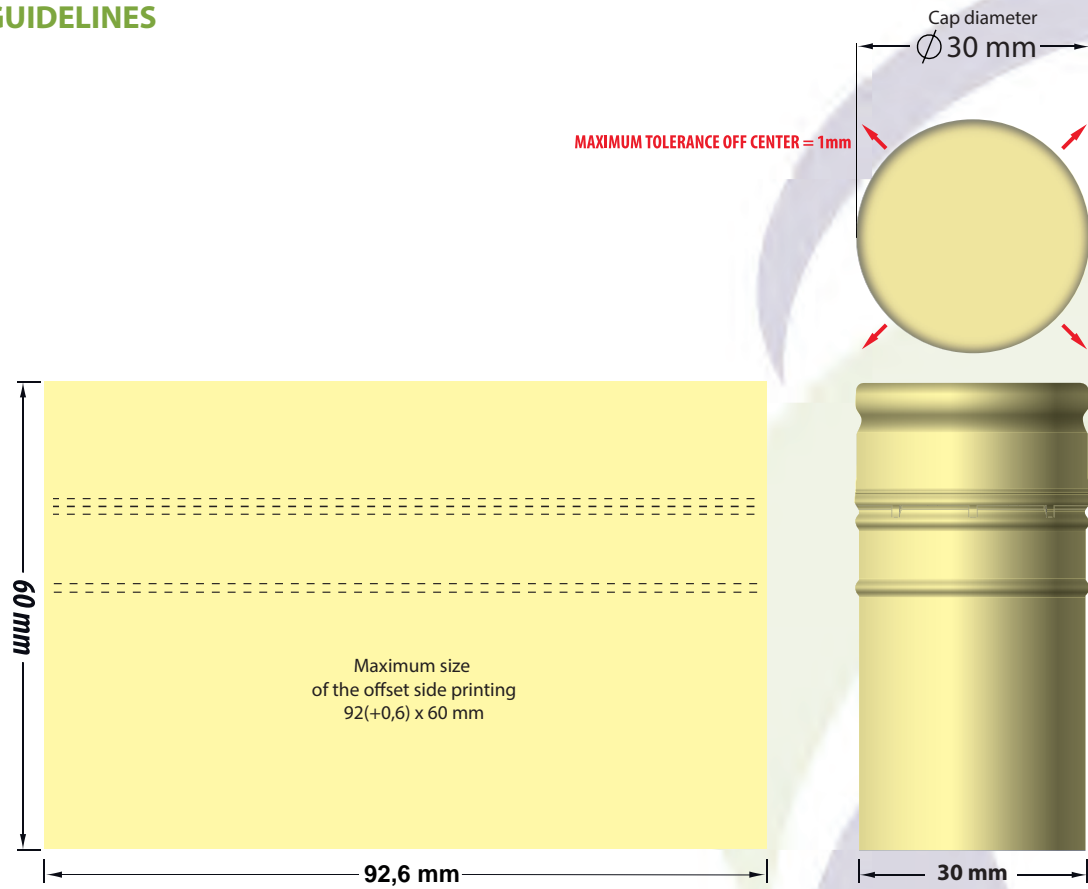
Application: Bottling of wine

Height of tearing off: 16 mm (+/- 0,20)

TECHNICAL DRAWING



ARTWORK GUIDELINES



PRODUCT SPECIFICATION

Charakterisation Aluminium cap with diameter 30 mm and length 60 mm

Structure

1. Aluminium base
 - chemical state AL
 - physical state H14
 - tensile strength 110 - 150 Rm N/mm²
 - Rp02 yield strength 90 - 130 Rm N/mm²
 - liner SARANEX/SARANTIN/SPARKLING
2. General features
 - external diameter 29,7 mm ($\pm 0,20$)
 - overall height 59,5 mm (-0,0; +0,5)
 - internal \varnothing of liner 28,6 mm
 - height of tearing off 16 mm ($\pm 0,20$)
 - weight of cap with liner 4,24 g
3. Printing features
 - internal printing: polyester varnish
 - external printing: polyester varnish
4. Basic material - aluminium sheet with thickness 0,23 mm
5. Liner - plastic liner from low density polyethylene/tin
6. Inside varnish
7. Printing of external walls
 - printing inks and protective external varnish
 - Hot-foil
 - Embossing

Packing

1. Five-layer corrugated cardboard box (590x390x450)
2. Plastic non-toxic bag 600 + 2 x 200 x 970 mm, 15 my
3. Quantity per box: 1 500 pcs
4. Pallet standard: 1 200 x 800 mm
5. Boxes per pallet: 16 pcs
6. Caps per pallet: 24 000 pcs
7. External wrapping: wraparound foil
8. Product identification: label

Storage

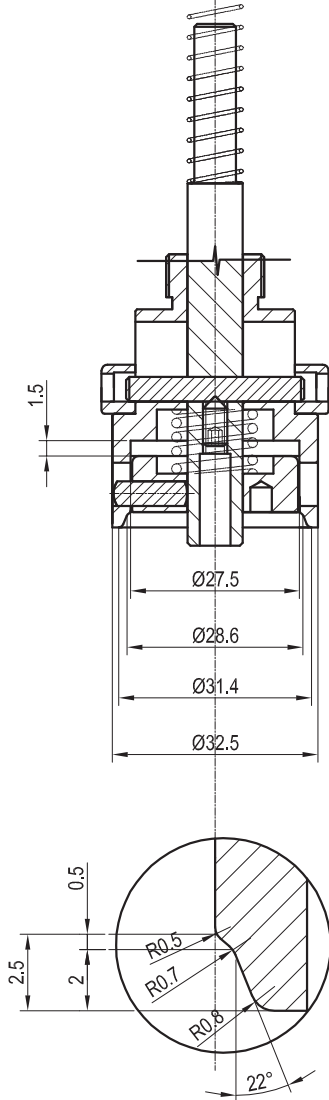
1. Caps must be stored in a dry room.
2. We do not recommend storing pallets with caps stacked on top of each other because they could be damaged.
3. If a box of caps is only partially used in a bottling run, the remaining caps in the box must be protected against dust and dirt.

Application method

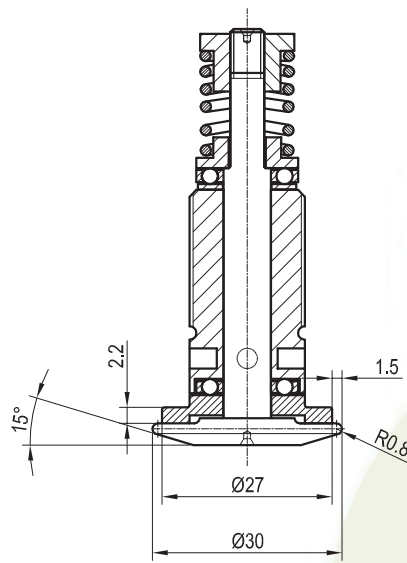
Caps are intended for sealing of standard wine bottles.

The seal is suitable for contact with all food types, when used at ambient temperatures up to hof fill at maximum of 70°C and then stored at room temperature.

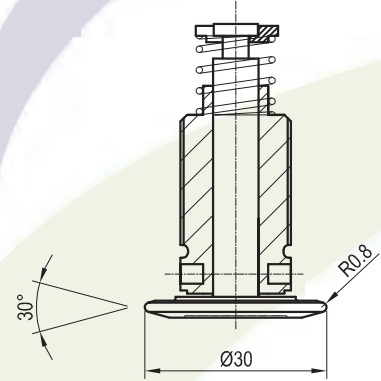
PREMICAPSULA MOBILE
MOBILE PRESSURE BLOCK



RULLO BORDATORE STELCAP PER BVS
STELCAP TUCK-UNDER ROLLER FOR BVS



RULLO FILETTATORE
THREAD ROLLER



DETAILS RELATING TO THE CAP

Nominal dimension of the cap (D x h)	30x60
--------------------------------------	-------

DETAILS FOR THE APPLICATION OF THE CAP

Vertical load of the head on the cap	180 +/- 10 [Kg]
Side pressure of the threading rollers	Min. 8 [Kg] - Max. 10 [Kg]
Radius of the threading rollers	0.8 [mm] +/- 0.05 [mm]
Side pressure of the tuck-under rollers	Min. 8 [Kg] - Max. 10 [Kg]
Radius of the tuck-under rollers	0.8 [mm] +/- 0.05 [mm]
Reforming diameter	27.5 [mm] +/- 0.05 [mm]
Depth	1.5 [mm] +/- 0.1 [mm]

OPENING TORQUE (referred to laboratory conditions and dry glass bottles)

Slip torque (the torque required for the first rotation; disengagement of the liner from the bottles sealing face)	Min. 6 [lbs inc] - Max. 16 [lbs inc]
Break torque (the torque required to break the bridges) (*): 5% of the measured values may be up to a maximum of 20% over the reference limits	Min. 6 [lbs inc] - Max. 16 [lbs inc]
Resistance to static force on the head	Depending to the capping conditions, bottled products, CO2 gas volume, pasteurisation or sterilisation cycle, neck finish, etc.: quantifiable by a specific test client